

ORDINANCE NO. 3751

AN ORDINANCE OF THE CITY OF DODGE CITY, KANSAS AMENDING THE OFFICIAL ZONING MAP OF THE CITY, CHANGING THE TRACT OF LAND LOCATED AT 800, 802, 804 & 806 BEESON COURT, FROM R-2 RESIDENTIAL MEDIUM DENSITY, TO C-2 COMMERCIAL HIGHWAY.

BE IT ORDAINED BY THE GOVERNING BODY OF THE CITY OF DODGE CIY, KANSAS:

SECTION 1: The following described real property located in Dodge City, Ford County, Kansas is hereby rezoned:

Lots 6-9
Beeson Court Subdivision
Dodge City, Ford County, Kansas

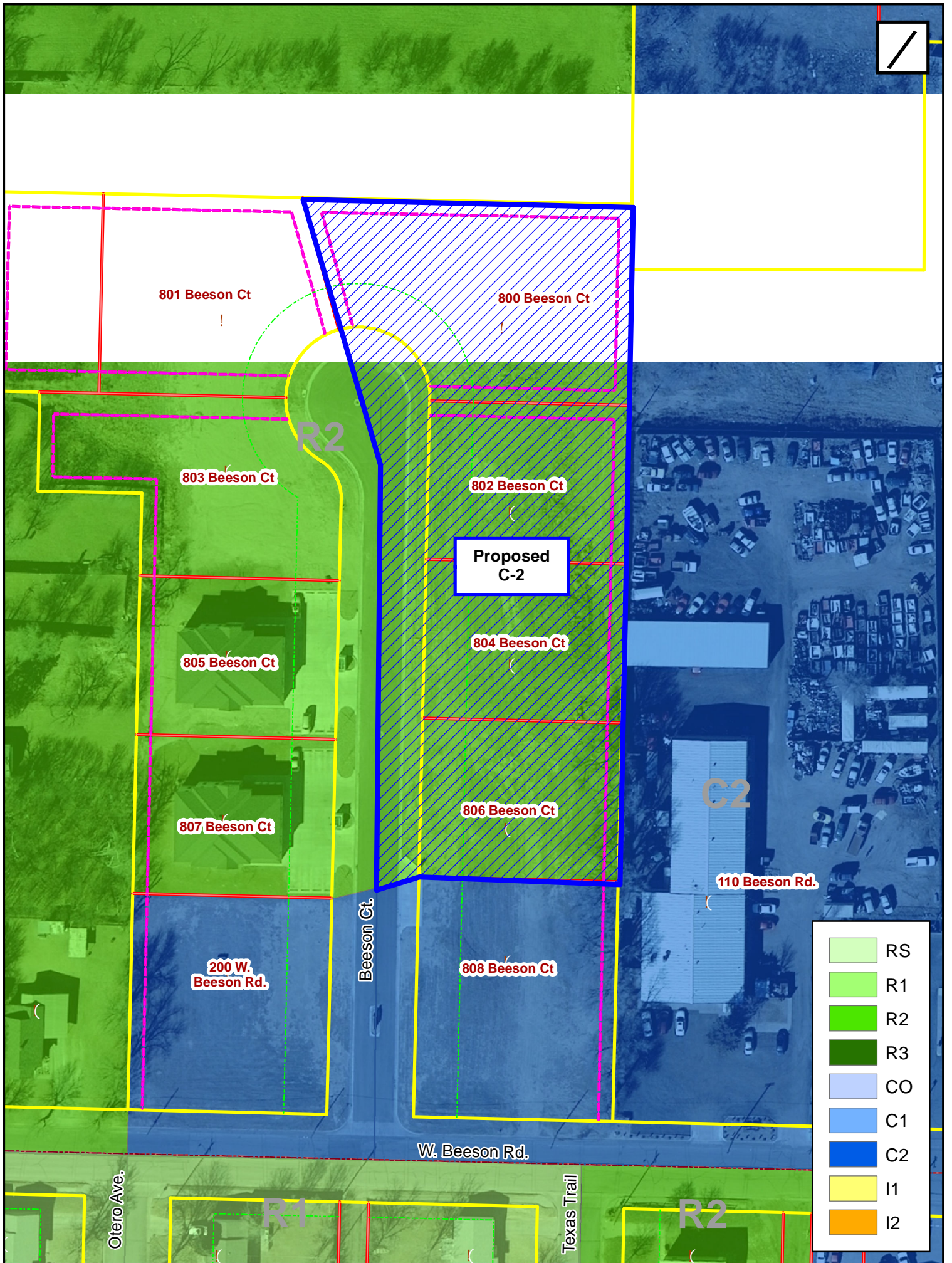
SECTION 2: This ordinance shall take effect, from and following its publication in the official paper, as required by law.

PASSED BY THE CITY OF DODGE CITY GOVERNING BODY, IN REGULAR SESSION AND APPROVED BY THE MAYOR, THIS FIFTEENTH DAY OF FEBRUARY, 2021.

RICK SOWERS, MAYOR

ATTEST:

CONNIE MARQUEZ, CITY CLERK



801 Beeson Ct

800 Beeson Ct

803 Beeson Ct

802 Beeson Ct

Proposed
C-2

805 Beeson Ct

804 Beeson Ct

807 Beeson Ct

806 Beeson Ct

200 W.
Beeson Rd.

Beeson Ct

808 Beeson Ct

110 Beeson Rd.

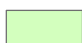



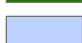
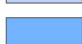



W. Beeson Rd.

Otero Ave.

R1

Texas Trail

R2

	RS
	R1
	R2
	R3
	CO
	C1
	C2
	I1
	I2